



Bundesamt  
für Sicherheit in der  
Informationstechnik

# **Process Description of the CCMB Change Proposal (CP) Process**

Bundesamt für Sicherheit in der Informationstechnik, BSI

Section 322, Certification

Version 1.11

Date: 09 August 2007

## Document History

<b>Version</b>	<b>Author</b>	<b>Change</b>
1.0	BSI	Initial Version
1.1	BSI	Editorial Corrections
1.11	BSI	Minor changes to make document barrier free

## Table of Contents

<b>1</b>	<b>Introduction</b>	<b>3</b>
<b>2</b>	<b>Formal Process Definition</b>	<b>4</b>
<b>3</b>	<b>Explanation of the Process steps</b>	<b>5</b>
<b>4</b>	<b>CP Template</b>	<b>6</b>
<b>5</b>	<b>References</b>	<b>7</b>

## 1 Introduction

The intention of this document is to describe the Process of a Change Proposal (CP) for the Common Criteria Version 3.1 ([1] to [3]) in conformance with [5]. A CP is a means to express any deficiencies or suggestions for improvement of the CC. Such a CP can e.g. be of an editorial nature (e.g. misspelling of word three in paragraph five of the CEM, [4]) or can be of a more technical or general scope.

The CP process is intended to replace the RI process used for the Common Criteria Version 2.

In addition to this process description a separate template is provided by the BSI. Please note that it is mandatory to use this template. All other forms of CPs (e.g. mail, pdf-file,...) can be rejected by the BSI CC Scheme.

Chapter 2 describes the CP Process with a flow chart. The flow chart steps are described in further detail in chapter 3 of this document. Chapter 4 provides details on the CP form that has to be used.

## 2 Formal Process Definition

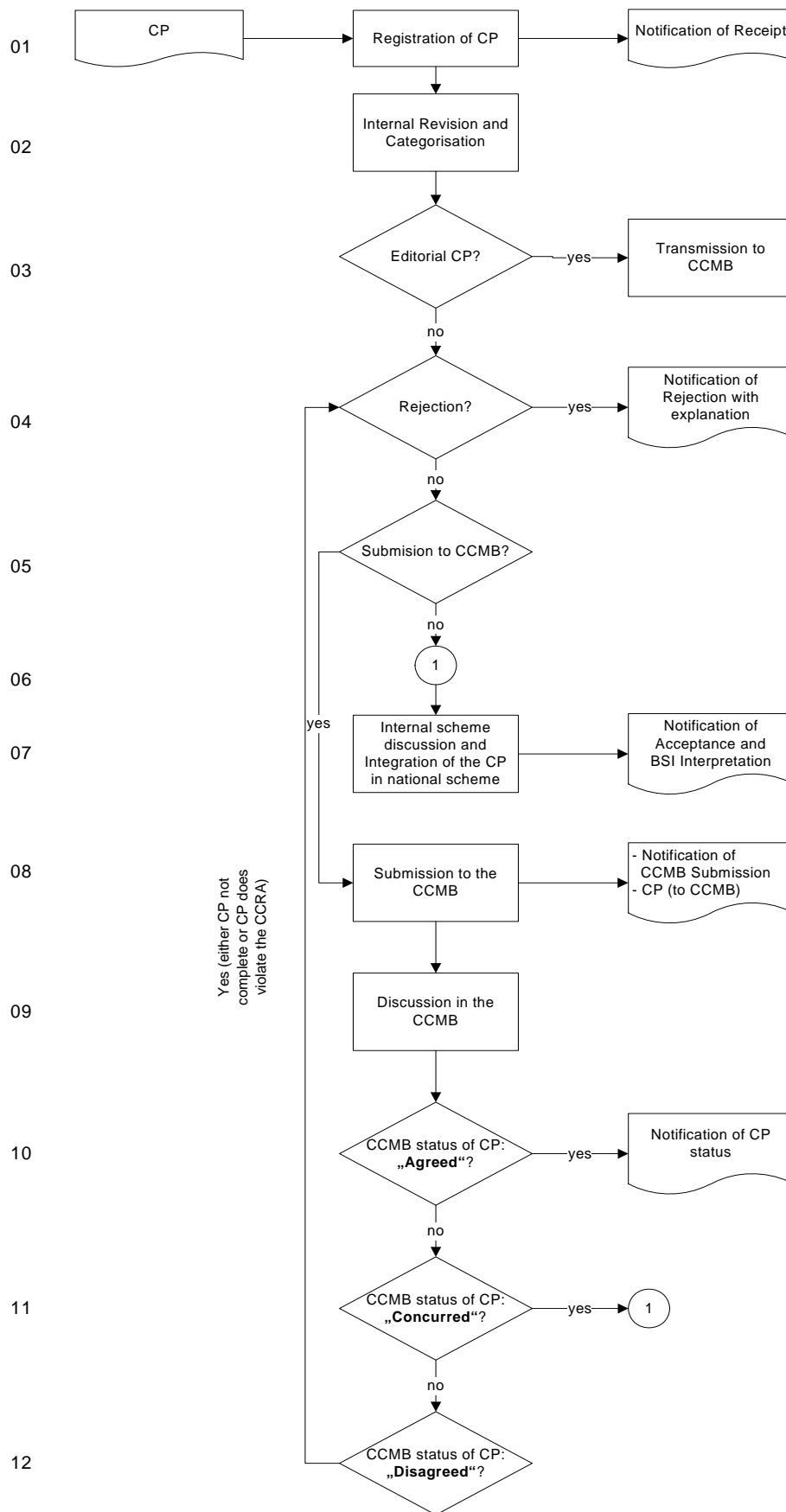


Figure: Flow-chart defining the CP Process

### 3 Explanation of the Process steps

Process Step	Explanation
01	<p>A CP can be sent to the BSI scheme by anyone who has an interest in the improvement of the Common Criteria. Only CPs using the template as described in chapter 4 are accepted by the BSI. The language used shall be English. The template/form provided by the BSI has to be used. No other formats are accepted.</p> <p>The CP is registered by the BSI and a notification of reception is sent to the originator of the CP.</p>
02	<p>The content of the CP categorised as being either: editorial, technical or general. Step 2 may involve a discussion within the Certification Body and/or with the Originator of the CP to clarify any open questions and help with the categorisation.</p>
03	<p>In case of an editorial CP the CP is transferred to the CCMB for inclusion in the criteria and the process ends here. All other CPs are addressed in the remainder of the process.</p>
04	<p>Here the decision is made whether the CP is rejected or further processed. A reason for rejection is either that</p> <ul style="list-style-type: none"> <li>• the BSI thinks that the CP is not justified or</li> <li>• the CP was “disagreed” by the CCMB.</li> </ul> <p>A CP is “disagreed” if it is found to be in violation with the CCRA or incomplete.</p> <p>A notification will be sent out to the originator of the CP including an explanation for the rejection. In case of an incomplete CP the originator is asked to provide the missing information.</p>
05	<p>Since at this point the CP is found to be valid it is decided whether the CP has to be forwarded to the CCMB for discussion.</p> <p>It may also be the case that a CP previously “disagreed” by the CCMB is resent to the CCMB after an update has taken place. Retransmission probably happens if the disagreement was due to the CPs incompleteness. This update has to be provided by the CPs originator.</p> <p>If it seen unnecessary to forward the CP the process will carry on with step 07. Otherwise process step 08 will be used.</p>
06	<p>Entry point (used in process step 11, “Concurred CPs”).</p>
07	<p>In this process step a scheme internal interpretation for the CP is developed. There are three possible ways to get to this process step:</p> <ul style="list-style-type: none"> <li>• CP is valid but found unnecessary to be forwarded to the CCMB (only of national interest)</li> <li>• CP has been discussed in the CCMB an was categorised as “concurrent” (i.e. it was found to be in line with the CCRA but of no international meaning)</li> <li>• CP has been discussed in the CCMB and was categorised as</li> </ul>

Process Step	Explanation
	<p>“disagreed” (i.e. it was found to be in contradiction with the CCRA or incompletely described). Nevertheless it was judged by the national scheme to be important enough to develop a national interpretation.</p>
08	The CP is transmitted to the CCMB for discussion. A notification of that fact is sent to the originator.
09	<p>The CP is discussed in the CCMB. It is in the responsibility of the CCMB to decide when the CP is going to be discussed. The discussion can have three different results:</p> <ul style="list-style-type: none"> <li>• <b>Agreed</b> – the CP is seen to be worthy of adoption by the CCMB.</li> <li>• <b>Concurred</b> – the CP is seen to be acceptable by the CCMB in that its use would not violate mutual recognition, yet it is not seen as an approach the CCMB would adopt for International adoption.</li> <li>• <b>Disagreed</b> – use of the CP is either determined to violate mutual recognition or not found in such a mature state so as to be agreed. In the latter case it is expected that the CP will be improved and forwarded again for consideration.</li> </ul>
10	If the CP is “agreed” by the CCMB a notification is sent out to the originator. It is in the responsibility of the CCMB to find an international implementation for the CP.
11	If the CP is “concurred” by the CCMB the process is branched to process step 06.
12	If the CP is “disagreed” by the CCMB the process is branched to process step 04.

#### 4 CP Template

To send in a CP to the certification body a form provided on the BSI web site (located under the Common Criteria section) has to be used. Only CPs using this form are accepted.

## 5 List of abbreviations

<b>BSI</b>	Bundesamt für Sicherheit in der Informationstechnik
<b>CC</b>	Common Criteria
<b>CCMB</b>	Common Criteria Maintenance Board
<b>CCRA</b>	Arrangement on the Recognition of Common Criteria Certificates in the field of Information Technology Security
<b>CEM</b>	Common Methodology for Information Technology Security Evaluation
<b>CP</b>	Change Proposal

## 6 References

- [1] Common Criteria for Information Technology Security Evaluation, Part 1: Introduction and general model, September 2006, Version 3.1, Revision 1
- [2] Common Criteria for Information Technology Security Evaluation, Part 2: Security functional components, September 2006, Version 3.1, Revision 1
- [3] Common Criteria for Information Technology Security Evaluation, Part 3: Security assurance components, September 2006, Version 3.1, Revision 1
- [4] Common Methodology for Information Technology Security Evaluation, Evaluation methodology, September 2006, Version 3.1, Revision 1
- [5] CCMB Terms of Reference, Version 2.1, 23 September 2005, CCMB internal document